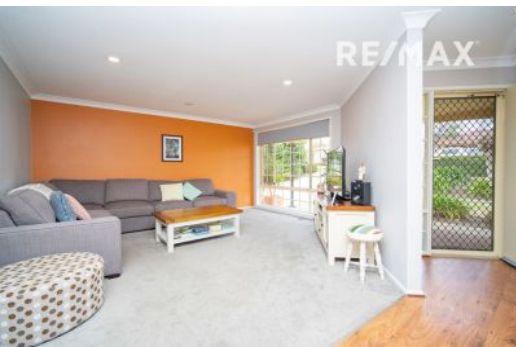


RE/MAX



4 🛏️ 2 🍳 2 🚗

Contact Rod Whealing
0416 132 764

Type House

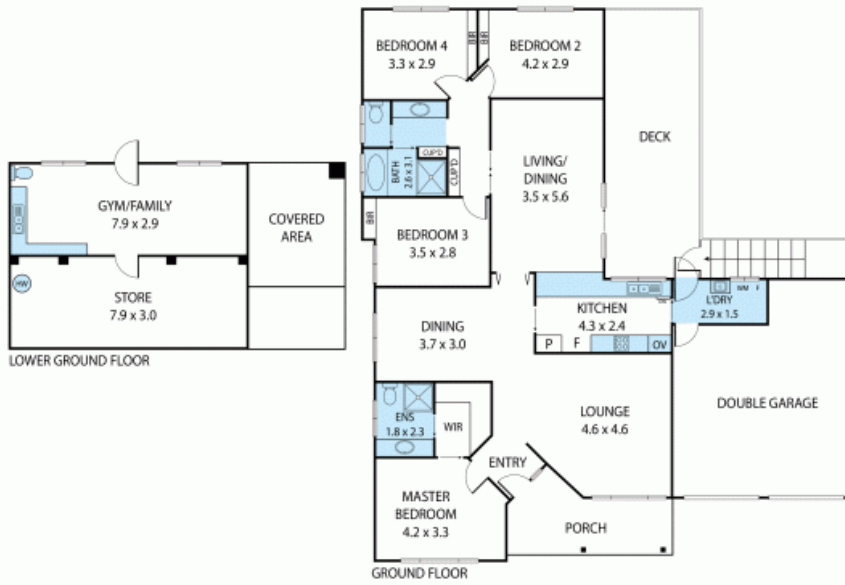
Land 829 m2

This much-loved family home set on a large 829sqm block located in the heart of Bourkelands with schools, child care, parks, shopping centres all close by.

On offer a generous size formal lounge room with separate dining plus an open plan kitchen, family room which leads out on to a fabulous outdoor timber deck with outstanding views.

In total four bedrooms the master with a fully renovated ensuite and walk-in robe, the remaining three bedrooms all with built-in robes. The main bathroom with both bath, shower and separate toilet.

Total year-round comfort with in-floor ducting heating and



27 Brooklyn Drive, Bourkelands 2650
TOTAL APPROX. FLOOR AREA 202 SQ.M

Whilst every attempt has been made to ensure the accuracy of the floor plan contained here, measurements of doors, windows, rooms and any other items are approximate and no responsibility is taken for any error, omission, or misstatement. This plan is for illustrative purposes only and should be used as such by any prospective purchaser.